

FREQUENTLY ASKED QUESTIONS

ETERNITY PE/GE/ME/LE

What
When
Which
Where
How
Who
Why



Date: 15th April 2015

Version: V1R1

Author: Tapan Upmanyu

How to Capture SMDR-Online through Ethernet Port?

- Login to System Engineer mode and go to the System Message Detail Recording followed by SMDR Online

MATRIX ETERNITY

SMDR - Online

SMDR - Online

Destination Port for SMDR - Outgoing Call Online: None

Destination IP Address : Port: 192 . 168 . 001 . 001 : 00514

Destination Port for SMDR - Incoming Call Online: None

Destination IP Address : Port: 192 . 168 . 001 . 001 : 00514

Destination Port for SMDR - Internal Call Online: None

Destination IP Address : Port: 192 . 168 . 001 . 001 : 00514

Submit Default

SMDR - Incoming Online Record Format

- Select the Destination Port (in our case 'Ethernet') and Destination IP (IP of the computer on which logs will be captured)

MATRIX ETERNITY

SMDR - Online

SMDR - Online

Destination Port for SMDR - Outgoing Call Online: Ethernet

Destination IP Address : Port: 192 . 168 . 154 . 118 : 20000

Destination Port for SMDR - Incoming Call Online: Ethernet

Destination IP Address : Port: 192 . 168 . 154 . 118 : 20000

Destination Port for SMDR - Internal Call Online: Ethernet

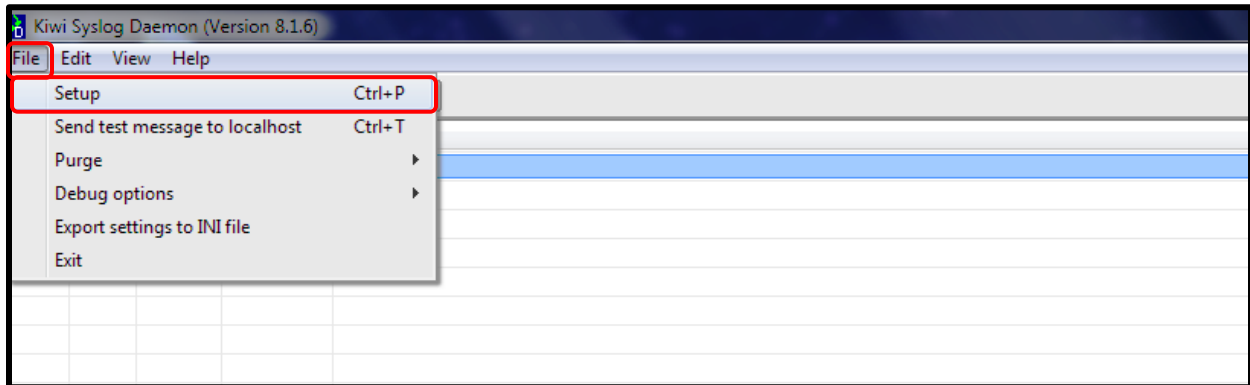
Destination IP Address : Port: 192 . 168 . 154 . 118 : 20000

Submit Default

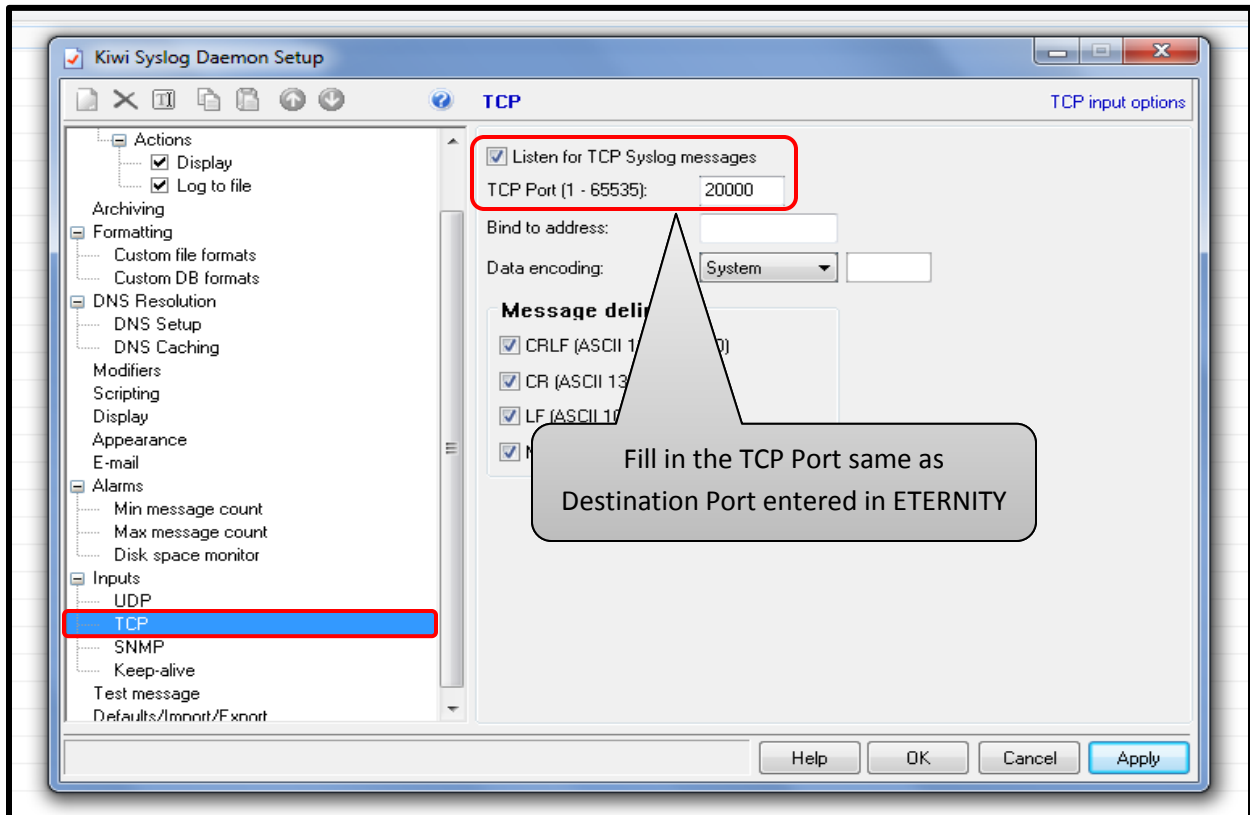
SMDR - Incoming Online Record Format

Fill in the Destination IP and Destination Port

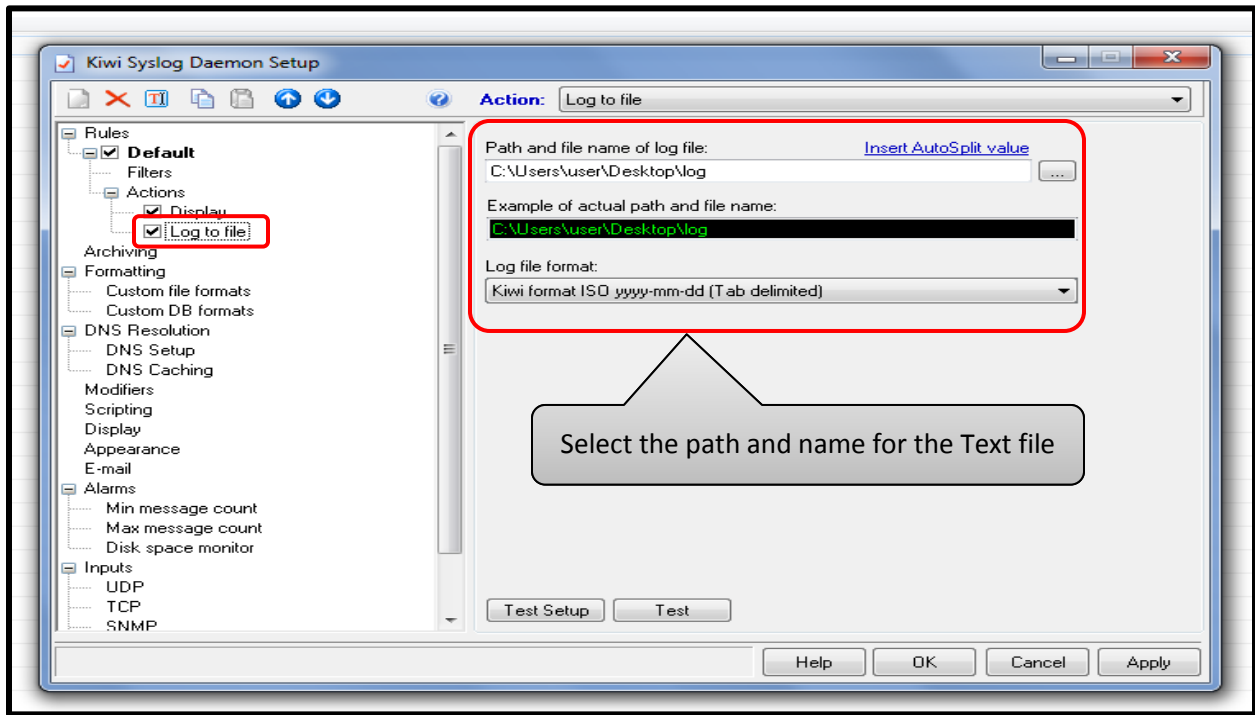
- Install Kiwi Syslog Server™ using link:
<http://www.kiwisyslog.com/products/kiwi-syslog-server/product-overview.aspx>
- Launch the application and click on File followed by Setup



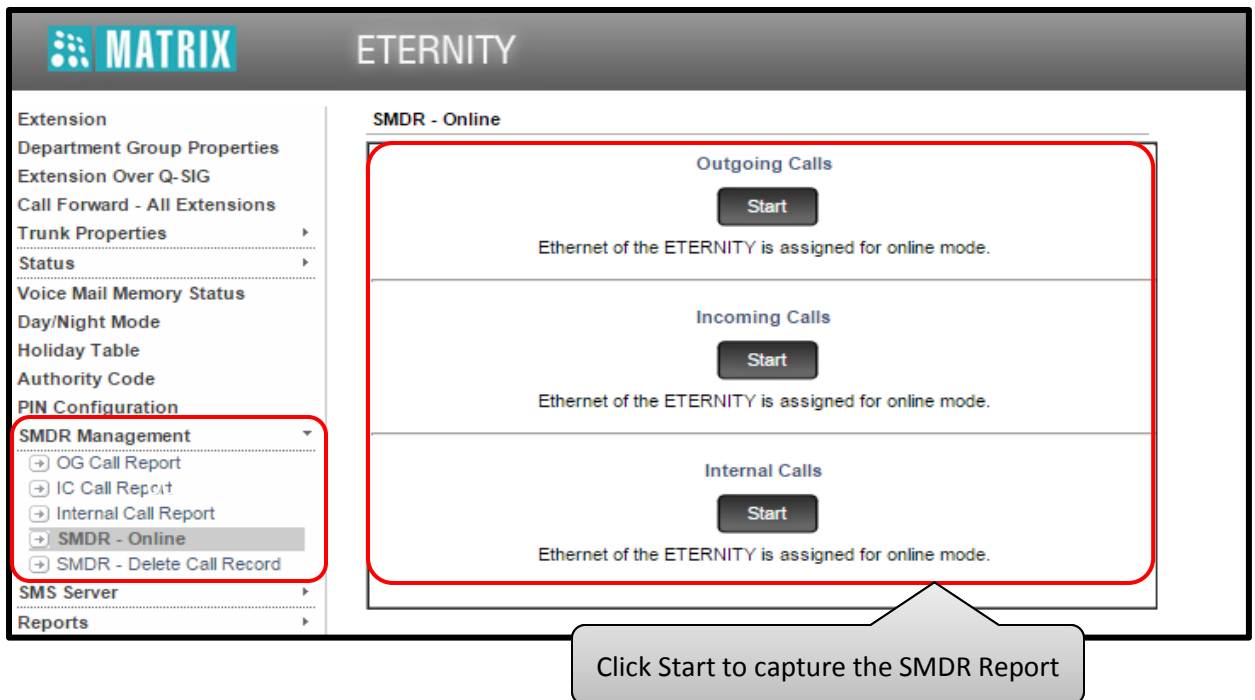
- Go to TCP and enter the TCP Port, same as the Destination Port entered in ETERNITY



- You can save the logs as Text File by checking 'Log to file' and providing the path



- Now Open Eternity Jeeves in System Administrator mode and go to SMDR Management followed by SMDR-Online



- You can observe the report getting captured on Kiwi Syslog after the calls getting disconnected

Date	Time	Priority	Hostname	Message
04-15-2015	12:42:33	Local7.Debug	192.168.154.245	2 3001 000 C001 2001 16-04-15 10:12:38 38 1 1.10 D
04-15-2015	12:39:39	Local7.Debug	192.168.154.245	IN 2001 3001 16-04-2015 10:10:09 19
04-15-2015	12:39:38	Local7.Debug	192.168.154.245	1 3301 000 C001 3001 16-04-15 10:10:07 13 1 1.10 D
04-15-2015	11:47:54	Local7.Debug	192.168.154.245	IN 3301 3001 16-04-2015 09:18:40 4
04-15-2015	11:46:24	Local7.Debug	192.168.154.245	20 3301 C001 2009 16-04-15 09:16:57 6 0 14 N
04-15-2015	11:46:22	Local7.Debug	192.168.154.245	IN 3301 2001 16-04-2015 09:16:56 12
04-15-2015	11:46:04	Local7.Debug	192.168.154.245	19 3301 C001 2009 16-04-15 09:16:10 46 0 0 U
04-15-2015	11:29:52	Local7.Debug	192.168.154.245	IN 3001 3931 15-04-2015 06:53:54 4
04-15-2015	11:29:52	Local7.Debug	192.168.154.245	IN 2013 3001 15-04-2015 06:53:42 6
04-15-2015	11:29:52	Local7.Debug	192.168.154.245	IN 2013 3001 15-04-2015 06:50:50 5
04-15-2015	11:29:52	Local7.Debug	192.168.154.245	IN 3001 3931 15-04-2015 06:46:37 4
04-15-2015	11:29:52	Local7.Debug	192.168.154.245	IN 3001 3931 15-04-2015 06:46:19 13
04-15-2015	11:29:52	Local7.Debug	192.168.154.245	IN 3001 3931 15-04-2015 06:45:28 7
04-15-2015	11:29:52	Local7.Debug	192.168.154.245	IN 3001 3931 15-04-2015 06:45:19 13
04-15-2015	11:29:52	Local7.Debug	192.168.154.245	IN 3001 3931 15-04-2015 06:45:10 7
04-15-2015	11:29:52	Local7.Debug	192.168.154.245	IN 2013 3931 15-04-2015 06:45:01 8
04-15-2015	11:29:52	Local7.Debug	192.168.154.245	IN 3001 3931 15-04-2015 01:04:38 3
04-15-2015	11:29:52	Local7.Debug	192.168.154.245	IN 2013 3931 15-04-2015 00:10:42 19
04-15-2015	11:29:52	Local7.Debug	192.168.154.245	IN 2013 3931 15-04-2015 00:09:44 10
04-15-2015	11:29:52	Local7.Debug	192.168.154.245	IN 3001 3931 15-04-2015 00:02:12 4
04-15-2015	11:29:52	Local7.Debug	192.168.154.245	IN 3001 3931 14-04-2015 23:52:36 7
04-15-2015	11:29:52	Local7.Debug	192.168.154.245	IN I001 3001 14-04-2015 22:21:52 10
04-15-2015	11:29:52	Local7.Debug	192.168.154.245	IN 3001 I001 14-04-2015 22:04:18 6
04-15-2015	11:29:52	Local7.Debug	192.168.154.245	IN 3001 I001 14-04-2015 22:01:54 15
04-15-2015	11:29:52	Local7.Debug	192.168.154.245	IN 3001 I001 14-04-2015 22:01:11 9
04-15-2015	11:29:52	Local7.Debug	192.168.154.245	IN I001 3001 14-04-2015 21:58:37 21
04-15-2015	11:29:52	Local7.Debug	192.168.154.245	IN 3001 3931 14-04-2015 20:08:43 15
04-15-2015	11:29:52	Local7.Debug	192.168.154.245	IN 3001 3931 14-04-2015 20:08:21 19
04-15-2015	11:29:52	Local7.Debug	192.168.154.245	IN 3001 3931 14-04-2015 20:07:57 19
04-15-2015	11:29:52	Local7.Debug	192.168.154.245	IN 3001 3931 14-04-2015 20:07:39 16
04-15-2015	11:29:52	Local7.Debug	192.168.154.245	IN 3001 3931 14-04-2015 20:07:21 17
04-15-2015	11:29:52	Local7.Debug	192.168.154.245	IN 3001 3931 14-04-2015 20:06:25 54

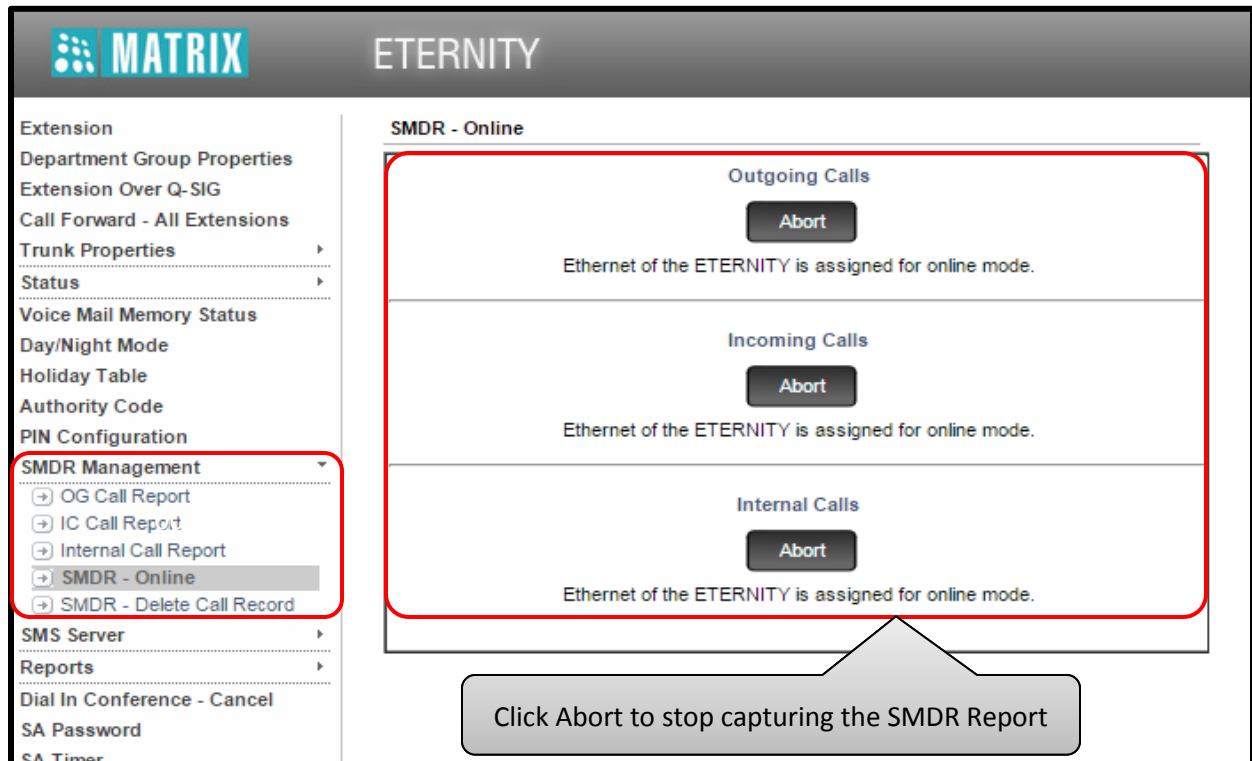
- You can also find similar logs in the form of the Text file as configured earlier

```

C:\Users\user\Desktop\log - Notepad++
File Edit Search View Encoding Language Settings Macro Run Plugins Window ?
freedom.txt new 1 a.log a(1).log a(2).log 222222222.log log
1 | 2015-04-15 11:29:51 Local7.Debug 192.168.154.245 1 6001@192.168.154 V001 3931 14-04-15 19:51:02 0 0 48 N
2 | 2015-04-15 11:29:51 Local7.Debug 192.168.154.245 2 6001@192.168.154 V001 3931 14-04-15 19:52:53 0 0 27 N
3 | 2015-04-15 11:29:51 Local7.Debug 192.168.154.245 3 6001@192.168.154 V001 3931 14-04-15 19:59:25 0 0 28 N
4 | 2015-04-15 11:29:51 Local7.Debug 192.168.154.245 4 6001@192.168.154 V001 3931 14-04-15 20:01:45 0 0 31 N
5 | 2015-04-15 11:29:51 Local7.Debug 192.168.154.245 5 6001@192.168.154 V001 3931 14-04-15 20:04:38 0 0 8 N
6 | 2015-04-15 11:29:51 Local7.Debug 192.168.154.245 6 6001@192.168.154 V001 3931 14-04-15 23:47:14 0 0 37 N
7 | 2015-04-15 11:29:51 Local7.Debug 192.168.154.245 7 6001@192.168.154 V001 3931 14-04-15 23:49:01 0 0 22 N
8 | 2015-04-15 11:29:51 Local7.Debug 192.168.154.245 8 6001@192.168.154 V001 3931 14-04-15 23:49:43 0 0 21 N
9 | 2015-04-15 11:29:51 Local7.Debug 192.168.154.245 9 6001@192.168.154 V001 3931 15-04-15 00:05:29 0 0 37 N
10 | 2015-04-15 11:29:51 Local7.Debug 192.168.154.245 10 6001@192.168.154 V001 3931 15-04-15 00:06:52 0 0 13 N
11 | 2015-04-15 11:29:51 Local7.Debug 192.168.154.245 11 6001@192.168.154 V001 3931 15-04-15 00:08:27 0 0 18 N
12 | 2015-04-15 11:29:51 Local7.Debug 192.168.154.245 12 3000@192.168.154 V001 3931 15-04-15 00:37:18 0 0 8 N
13 | 2015-04-15 11:29:51 Local7.Debug 192.168.154.245 13 3303@192.168.154 V001 3931 15-04-15 00:38:25 0 0 8 N
14 | 2015-04-15 11:29:51 Local7.Debug 192.168.154.245 14 3303@192.168.154 V001 3001 15-04-15 00:38:37 0 0 5 N
15 | 2015-04-15 11:29:51 Local7.Debug 192.168.154.245 15 6001@192.168.154 V001 3931 15-04-15 01:06:12 0 0 21 N
16 | 2015-04-15 11:29:51 Local7.Debug 192.168.154.245 16 6001@192.168.154 V001 3931 15-04-15 01:07:10 0 0 23 N
17 | 2015-04-15 11:29:51 Local7.Debug 192.168.154.245 17 6001@192.168.154 V001 3931 15-04-15 01:07:51 0 0 9 N
18 | 2015-04-15 11:29:51 Local7.Debug 192.168.154.245 18 6001@192.168.154 V001 3931 15-04-15 01:08:20 0 0 55 N
19 | 2015-04-15 11:29:52 Local7.Debug 192.168.154.245 IN 3001 3931 14-04-2015 19:11:50 22
20 | 2015-04-15 11:29:52 Local7.Debug 192.168.154.245 IN 2009 3931 14-04-2015 19:13:20 11
21 | 2015-04-15 11:29:52 Local7.Debug 192.168.154.245 IN 2009 3931 14-04-2015 19:13:43 16
22 | 2015-04-15 11:29:52 Local7.Debug 192.168.154.245 IN 2009 3931 14-04-2015 19:14:18 9
23 | 2015-04-15 11:29:52 Local7.Debug 192.168.154.245 IN 3001 3931 14-04-2015 19:14:27 12
24 | 2015-04-15 11:29:52 Local7.Debug 192.168.154.245 IN 2009 3931 14-04-2015 19:15:02 31
25 | 2015-04-15 11:29:52 Local7.Debug 192.168.154.245 IN 3001 3931 14-04-2015 19:15:37 28
26 | 2015-04-15 11:29:52 Local7.Debug 192.168.154.245 IN 3001 3931 14-04-2015 19:18:52 3
27 | 2015-04-15 11:29:52 Local7.Debug 192.168.154.245 IN 3001 3931 14-04-2015 19:19:16 16
28 | 2015-04-15 11:29:52 Local7.Debug 192.168.154.245 IN 3001 3931 14-04-2015 19:46:30 154
29 | 2015-04-15 11:29:52 Local7.Debug 192.168.154.245 IN 2009 3931 14-04-2015 20:02:49 35
30 | 2015-04-15 11:29:52 Local7.Debug 192.168.154.245 IN 2009 3931 14-04-2015 20:03:24 18
31 | 2015-04-15 11:29:52 Local7.Debug 192.168.154.245 IN 2009 3931 14-04-2015 20:04:48 28
32 | 2015-04-15 11:29:52 Local7.Debug 192.168.154.245 IN 3001 3931 14-04-2015 20:05:25 23
33 | 2015-04-15 11:29:52 Local7.Debug 192.168.154.245 IN 3001 3931 14-04-2015 20:05:49 7
34 | 2015-04-15 11:29:52 Local7.Debug 192.168.154.245 IN 3001 3931 14-04-2015 20:05:59 22
Normal text file length: 8053 lines: 69 Ln: 1 Col: 1 Sel: 0 | 0

```

- You can stop capturing logs by clicking Abort



For more information, contact
Matrix Technical Training Team
Training@MatrixComSec.com

Disclaimer: The information contained in this e-mail and/or attachment may contain confidential or privileged information. Unauthorized use, disclosure or copying is strictly prohibited and may constitute unlawful act and can possibly attract legal action, civil and/or criminal. The contents of this message need not necessarily reflect or endorse the views of Matrix ComSec Pvt Ltd on any subject matter. Any action taken or omitted on this message is not entirely at your risk and the originator of this message nor does Matrix ComSec Pvt Ltd take any responsibility or liability towards the same. If you are not the intended recipient, please notify us immediately and permanently delete the message.