

FREQUENTLY ASKED QUESTIONS

ETERNITY PE/GE/ME/LE

What
When
Which
Where
How
Who
Why



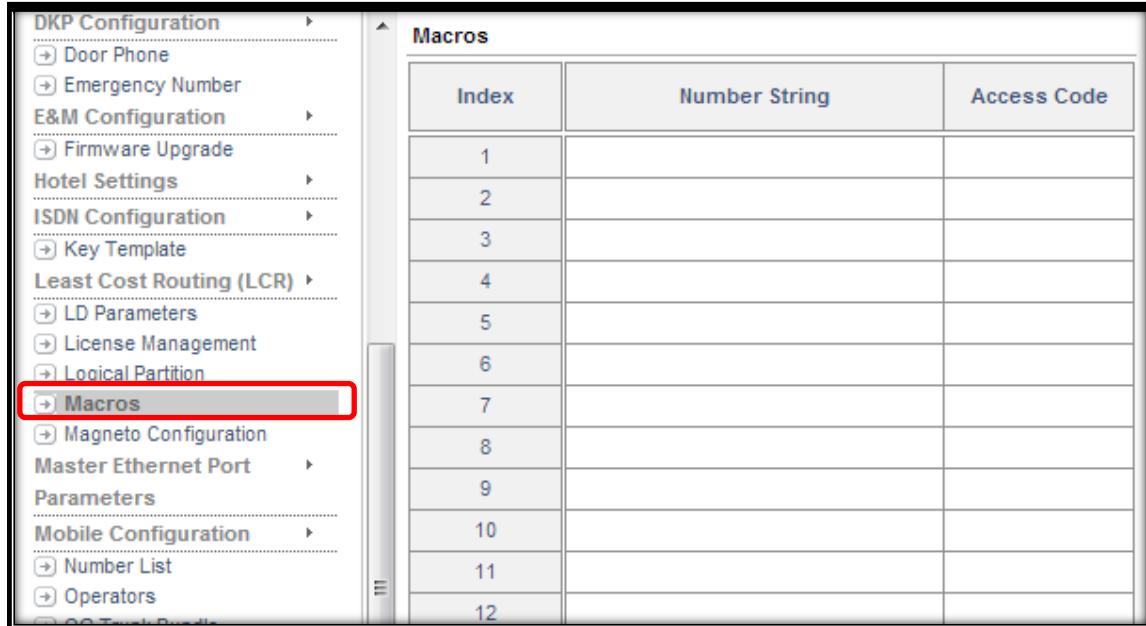
Date: 16th January 2015

Version: V1R1

Author: Tapan Upmanyu

How to Create Macro in ETERNITY PE/GE/ME/LE?

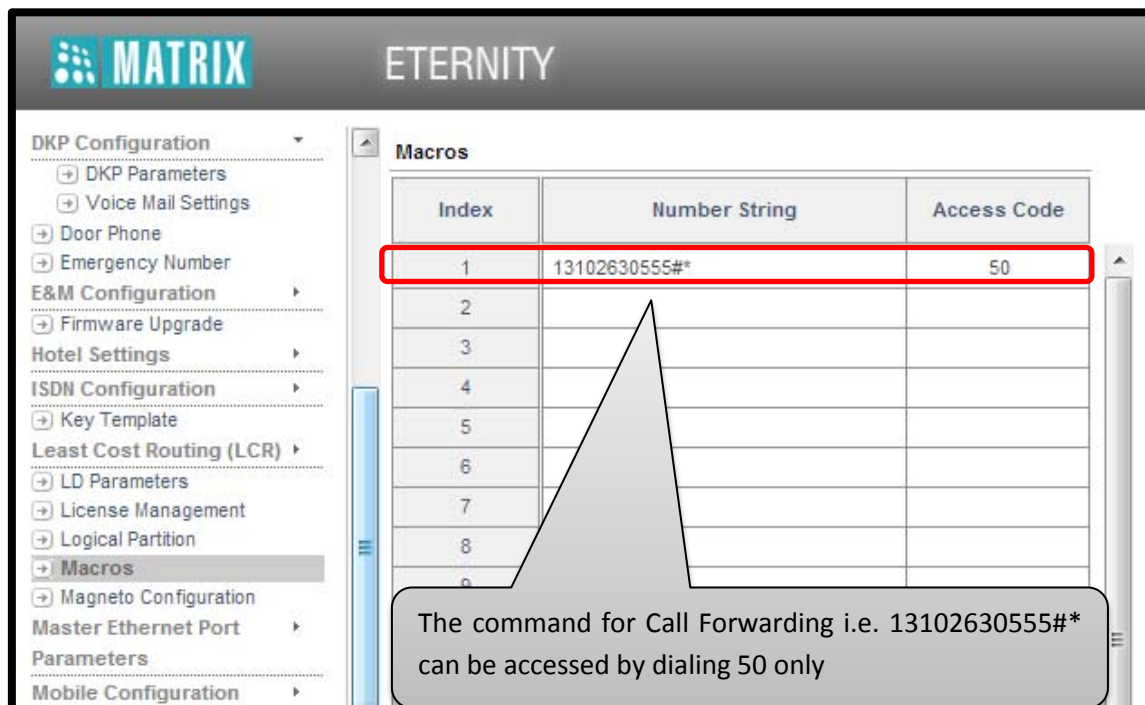
Step1: Open ETERNITY Jeeves and go to Macros



The screenshot shows the ETERNITY Jeeves interface. On the left, a sidebar contains various configuration categories. The 'Macros' option is highlighted with a red rectangular box. The main area on the right displays a table titled 'Macros' with three columns: 'Index', 'Number String', and 'Access Code'. The table contains 12 rows, all of which are currently empty.

Index	Number String	Access Code
1		
2		
3		
4		
5		
6		
7		
8		
9		
10		
11		
12		

Step2: Enter the string in the Number String Field and its corresponding Access Code



The screenshot shows the ETERNITY Jeeves interface with the 'Macros' table. The first row is filled with the following data: Index 1, Number String '13102630555#*', and Access Code '50'. This row is highlighted with a red rectangular box. A callout box points to this row with the text: 'The command for Call Forwarding i.e. 13102630555#* can be accessed by dialing 50 only'.

Index	Number String	Access Code
1	13102630555#*	50
2		
3		
4		
5		
6		
7		
8		
9		
10		
11		
12		

Step3 (Optional): You can also assign DSS Key to access a Macro. For that go to DKP Parameters

MATRIX ETERNITY

Call Cost Calculation

- Call Duration Control
- Change SA P/w
- Change SE P/w
- CLI Based Routing
- Class of Service
- Closed User Groups
- Communication Ports
- Configuration Upload

CO Configuration

- DDI Routing
- Default the System
- Department Groups
- DISA - CLI Authentication
- DKP Configuration**
 - DKP Parameters**
 - Voice Mail Settings
- Door Phone
- Emergency Number

E&M Configuration

- Firmware Upgrade

DKP Parameters

Port No.	Key Map	Call Pickup Group	Station Type
1	Personalized	99	Administration
2	Operator Template	99	Administration
3	Operator Template	99	Administration
4	Operator Template	99	Administration
5	Operator Template	99	Administration
6	Operator Template	99	Administration
7	Operator Template	99	Administration
8	Operator Template	99	Administration

Select Personalized under Key Map field of the DKP Port being configured

MATRIX ETERNITY

Call Cost Calculation

- Call Duration Control
- Change SA P/w
- Change SE P/w
- CLI Based Routing
- Class of Service
- Closed User Groups
- Communication Ports
- Configuration Upload

CO Configuration

- DDI Routing
- Default the System
- Department Groups
- DISA - CLI Authentication
- DKP Configuration
 - DKP Parameters**
 - Voice Mail Settings
- Door Phone
- Emergency Number

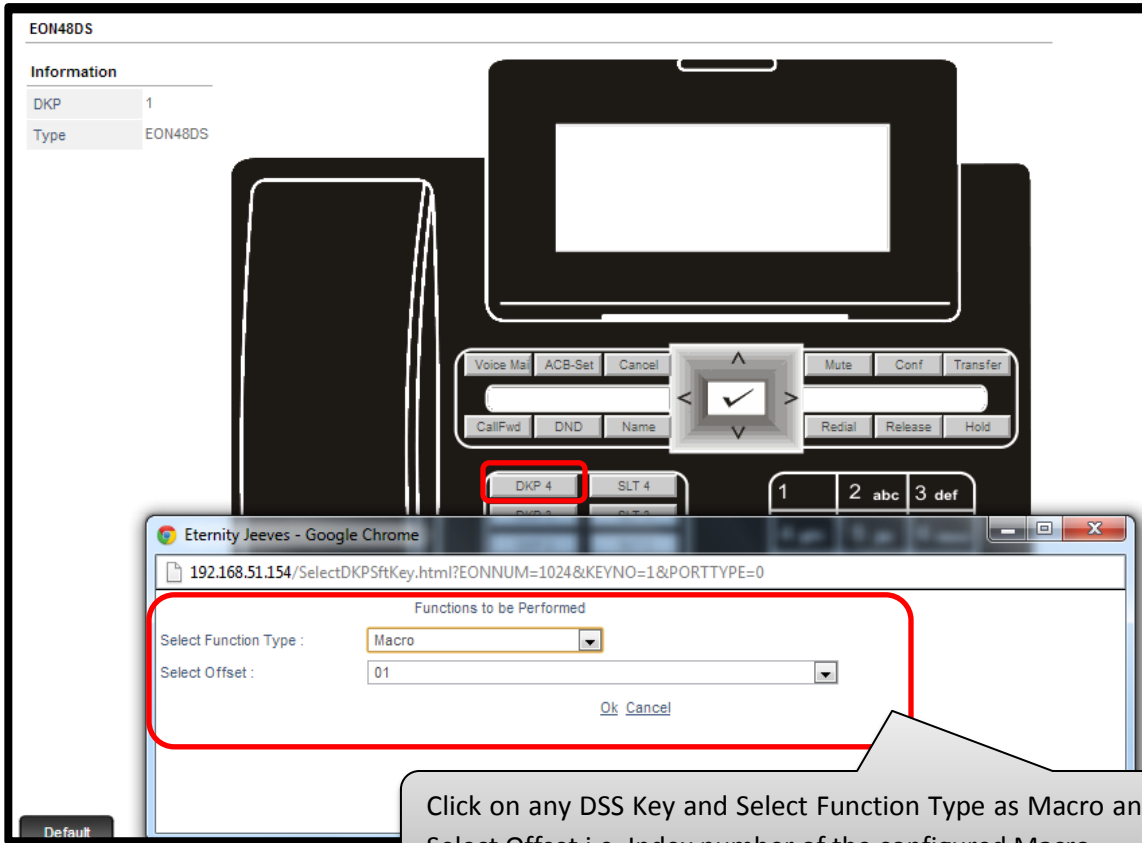
E&M Configuration

- Firmware Upgrade

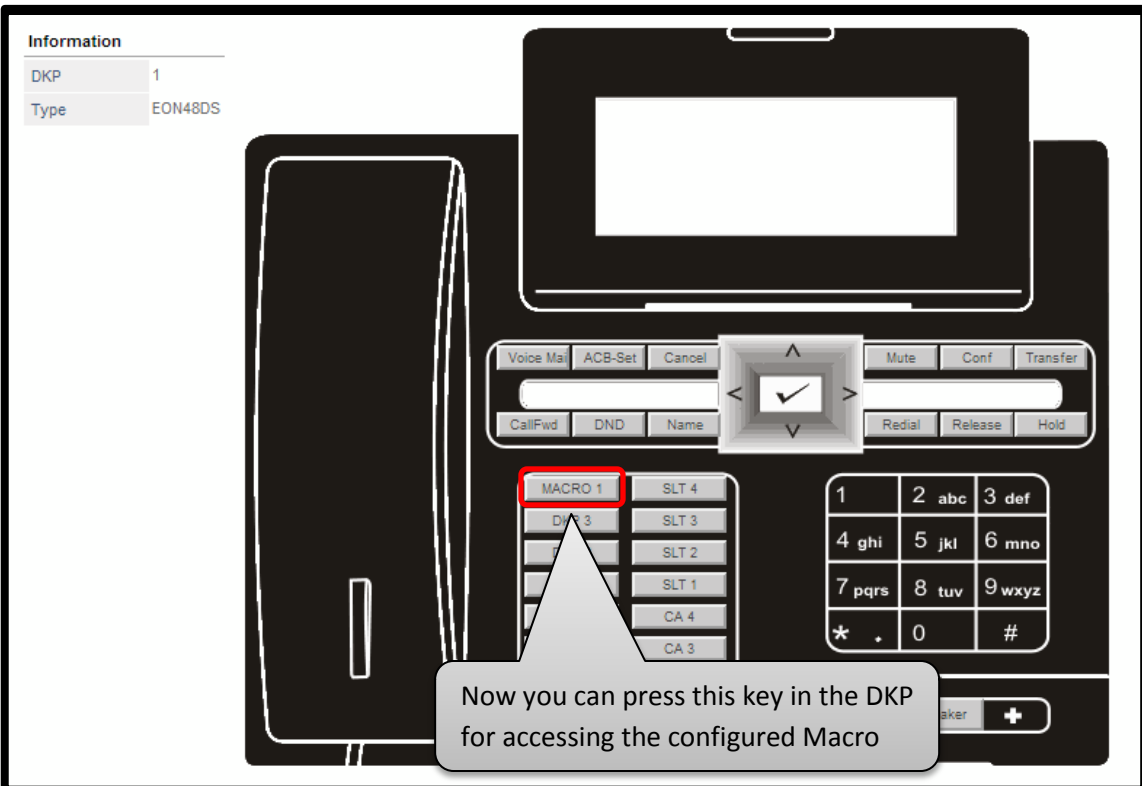
DKP Parameters

Port No.	DSS Keys	DSS1 Keys	DSS2 Keys	Personal Directory	Priority
1	DSS Keys	DSS1 Keys	DSS2 Keys	00	5 - Normal
2	DSS Keys	DSS1 Keys	DSS2 Keys	00	5 - Normal
3	DSS Keys	DSS1 Keys	DSS2 Keys	00	5 - Normal
4	DSS Keys	DSS1 Keys	DSS2 Keys	00	5 - Normal
5	DSS Keys	DSS1 Keys	DSS2 Keys	00	5 - Normal
6	DSS Keys	DSS1 Keys	DSS2 Keys	00	5 - Normal
7	DSS Keys	DSS1 Keys	DSS2 Keys	00	5 - Normal
8	DSS Keys	DSS1 Keys	DSS2 Keys	00	5 - Normal

Click on DSS Keys

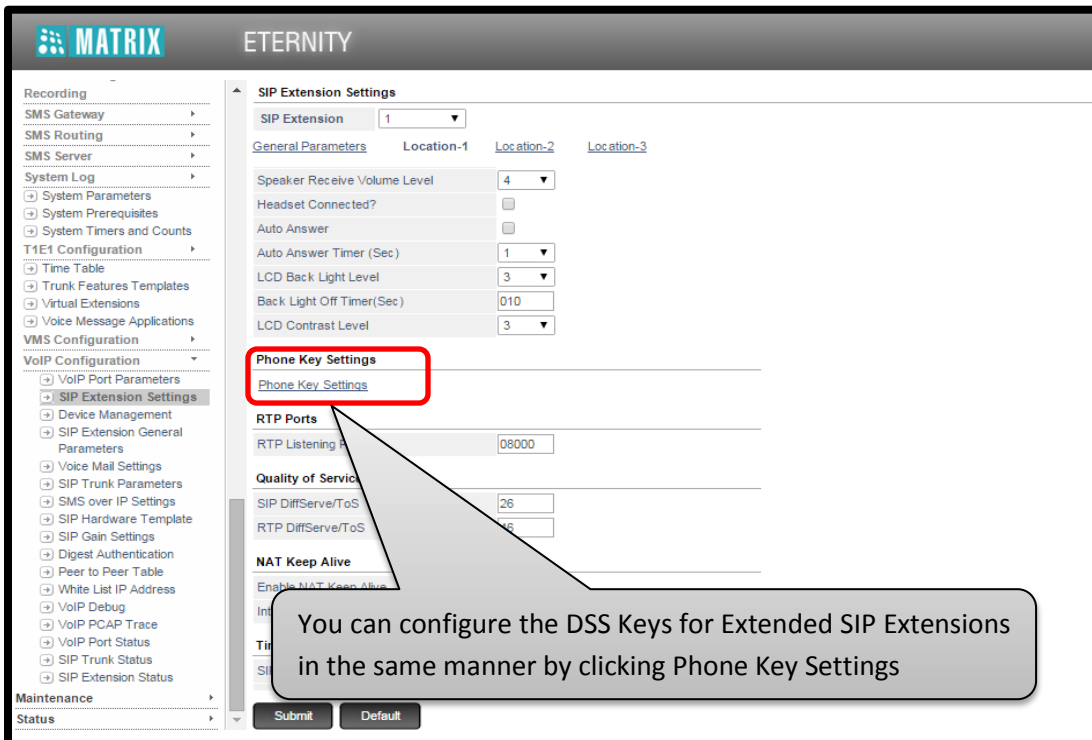
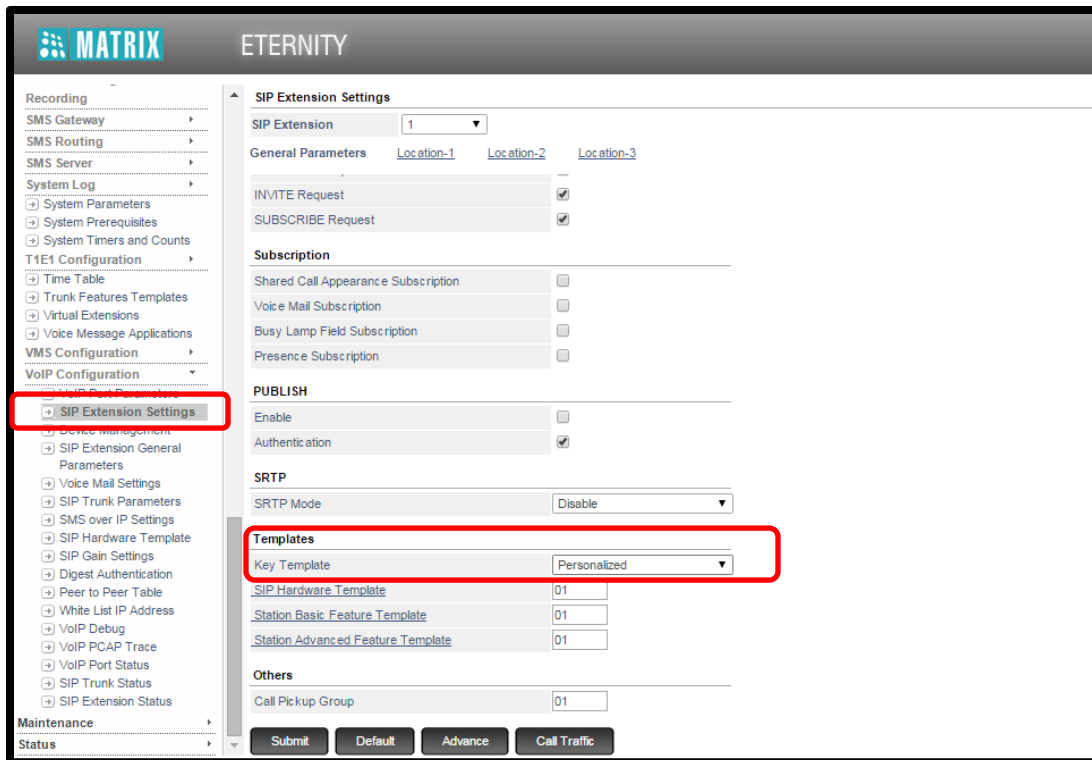


Click on any DSS Key and Select Function Type as Macro and Select Offset i.e. Index number of the configured Macro



Now you can press this key in the DKP for accessing the configured Macro

- You can also configure DSS Keys for Extended SIP Phones in the same manner



For more information, contact
Matrix Technical Training Team
Training@MatrixComSec.com

Disclaimer: The information contained in this e-mail and/or attachment may contain confidential or privileged information. Unauthorized use, disclosure or copying is strictly prohibited and may constitute unlawful act and can possibly attract legal action, civil and/or criminal. The contents of this message need not necessarily reflect or endorse the views of Matrix ComSec Pvt Ltd on any subject matter. Any action taken or omitted on this message is not entirely at your risk and the originator of this message nor does Matrix ComSec Pvt Ltd take any responsibility or liability towards the same. If you are not the intended recipient, please notify us immediately and permanently delete the message.